



BRÖRING
Technology GmbH

Catalogue *2023/2024*



Dear Ladies and Gentlemen,

We present you our catalogue.

For more than 25 years we have been supplying measurement technology for the poultry industry. Our instruments are used worldwide by

- Poultry farms
- Egg producers
- Egg processors
- Feed mills
- Universities
- Government testing laboratories

During these years we have continuously developed and optimised our products for and together with our customers.

We thank all our customers for their loyal partnership and good cooperation and look forward to the years to come.

Your Dr.- Ing. Stefan Bröring and his team



Our world revolves around the egg

The company Bröring IT has been established worldwide in the egg industry since 1994. We develop high-quality measuring instruments and software around the quality inspection of hen's eggs. From the very beginning, the quality of our products has been our most important concern.

On the next pages we present our measuring instruments for the examination of chicken eggs, poultry scales and accessories.

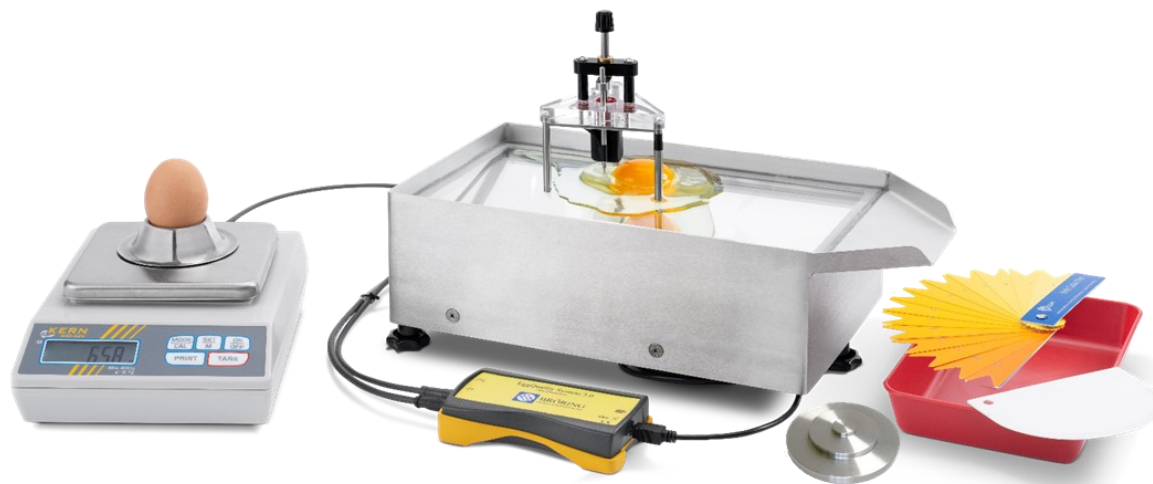
Table of contents

Bröring EggQuality 3.0 Basic equipment (Haugh-Units)	4
Complete packages	7
Replacement equipment and accessories for Bröring EggQuality 3.0	14
Software	18
Weight and quality testing of eggs	19
Fast Egg Shell Tester / Breaking strength	20
Egg white height gauge / Egg freshness	22
Yolk colour meter	25
Micrometer for determining the shell thickness	26
Poultry scales BIT PS 3.0 / Bluetooth	27
Poultry scales BIT PS 4.0 IoT / Bluetooth	29
Poultry scales Bit PS 5.0 / Automatik	30
Accessories for poultry scales	31

Bröring EggQuality 3.0 Basic equipment (Haugh-Units)

Bröring EggQuality 3.0—cost-effective entry into the recording of egg freshness (Haugh units) This package contains all individual components necessary for the recording of Haugh units.

Prerequisite: PC with Windows operating system (Windows 7 - 11) and USB



Art.-No.: 4001

Bröring EggQuality 3.0 Basic equipment (Haugh-Units) with the following individual components: :

Art.-No.: 1002

Mini data collector

Art.-No.: 1201

Egg white height gauge

Art.-No.: 1501

Laboratory balance Kern 440-43N, weighing range max 400 g

Art.-No.: 2001

Adjustment plate for egg white height gauge, material: stainless steel

Art.-No.: 2005

Bröring Work table type I (normal version), dimensions: 300 x 190 x 120 mm, (L*W*H) design: brushed stainless steel walls, glass top

Art.-No.: 2050

Set with drip tray, plastic spatula, colour fan, egg cup in stainless steel, Licefa work bowl A4-3, base 210 x 150 mm, 40 mm deep, top edge 260 x 200 mm, plastic spatula with 12 cm scraping edge

Art.-No.: 2101

Connecting cable from laboratory balance to mini data collector (DB9 – M8)

Art.-No.: 5001

Software suitable for Windows systems 7 – 11

Art.-No.: 6023

Carrying case with foam insert (CR) for BIT CR

Art.-No.: 4002

Bröring EggQuality 3.0 Basic equipment (Haugh-Units) Art. No.: 4001 incl. Measuring probe for shell thickness and caliper for egg shape index with the following individual components:



Art.-No.: 4001

Bröring EggQuality 3.0 Basic equipment (Haugh-Units)



Art.-No.: 1505

BIT Measuring probe with modified anvil for shell thickness incl. PC interface



Art.-No.: 1506

BIT Bröring Caliper for egg shape index 150 mm, incl. PC interface



Art.-No.: 2105

USB-Hub

4 port USB hub, model depending on availability



Art.-No.: 6023

Carrying case with foam insert (CR) for BIT CR

Measurement technology for the poultry industry for over 20 years

Art.-No.: 4003

Bröring EggQuality 3.0 Yolk colour measuring system with the following individual components:



Art.-No.: 1112

Yolk colour meter

The colour meter also serves as a worktable and replaces the worktable

Art.-No.: 2005



Art.-No.: 2050

Set with drip tray, plastic spatula, colour fan, egg cup in stainless steel, Licefa work bowl A4-3, base 210 x 150 mm, 40 mm deep, top edge 260 x 200 mm, plastic spatula with 12 cm scraping edge



Art.-No.: 3009

Yolk Colour Ring in stainless steel

4 x 5 x 5 cm 260 g



Art.-No.: 5003

Bröring EggQuality PC-Software (CR), Licence for colourimeter



Art.-No.: 6023

Carrying case with foam insert (CR) for BIT CR

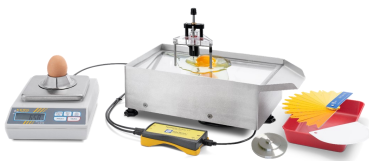


COMBINED PACKAGES FOR EGGQUALITY 3.0

Bröring EggQuality System 3.0 (Haugh-Units) Basic equipment Art.-No.: 4001 can be combined with the Fast Egg Shell Tester (FEST device, Art.-No.: 1101) or other measuring devices.

Art.-No.: 4004

Combined package with EggQuality 3.0 Basic equipment Art.-No.: 4001 (Haugh-Units), FEST-device, including software licence with the following individual components:



Art.-No.: 4001

Bröring EggQuality 3.0 Basic equipment (Haugh-Units)



Art.-No.: 1101

Fast-Egg-Shell-Tester

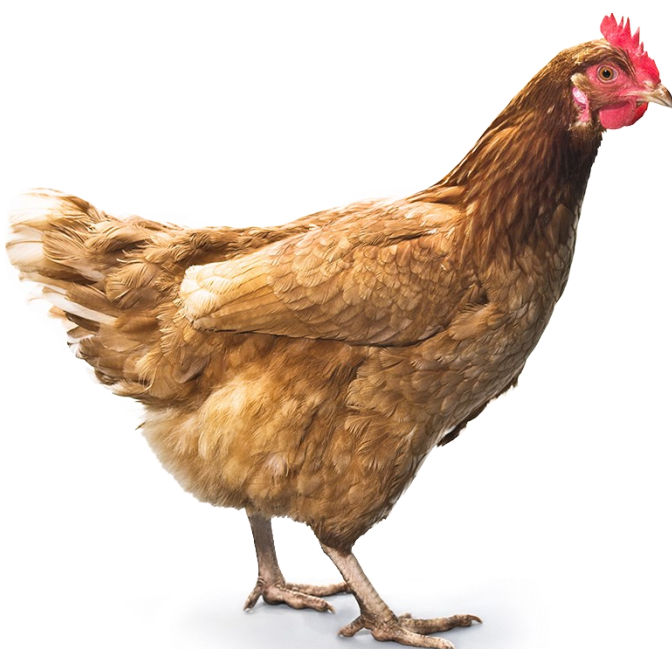
inclusive:

- Power supply unit (Art.-No.: 2011)
- Balancing weight 1000 g (Art.-No.: 1518)
- Carrying case (Art.-No.: 6022)



Art.-No.: 5002

Bröring EggQuality PC-Software (FEST), Licence for FEST device



Only at
Bröring Technology GmbH

Made in Germany

Measurement technology for the poultry industry for over 20 years

Art.-No.: 4005

Combined package with EggQuality 3.0 Basic equipment Art.-No.: 4001 (Haugh-Units), Yolk colour meter, including software licence with the following individual components:



Art.-No.: 4001

Bröring EggQuality 3.0 Basic equipment (Haugh-Units)



Art.-No.: 1112

Yolk colour meter

The colour meter also serves as a worktable and replaces the worktable Art.-No.: 2005



Art.-No.: 5003

Bröring EggQuality PC-Software (FEST), Licence for colourimeter



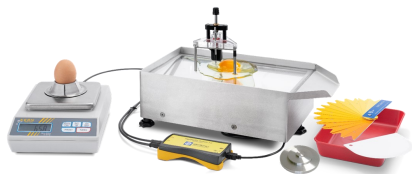
Art.-No.: 6023

Carrying case with foam insert (CR) for BIT CR



Art.-No.: 4006

Combined package with EggQuality 3.0 Basic equipment Art.-No.: 4001 (Haugh-Units), FEST device, yolk colour measuring device, including software licence with the following individual components:



Art.-No.: 4001

Bröring EggQuality 3.0 Basic equipment (Haugh-Units)



Art.-No.: 1101

Fast-Egg-Shell-Tester

inclusive:

- Power supply unit (Art.-No.: 2011)
- Balancing weight 1000 g (Art.-No.: 1518)
- Carrying case (Art.-No.: 6022)



Art.-No.: 1112

Yolk colour meter

The colour meter also serves as a worktable and replaces the worktable Art.-No.: 2005



Art.-No.: 2105

USB-Hub

4 port USB hub, model depending on availability



Art.-No.: 5002

Bröring EggQuality PC-Software (FEST), Licence for FEST device



Art.-No.: 5003

Bröring EggQuality PC-Software (CR), Licence for colourimeter

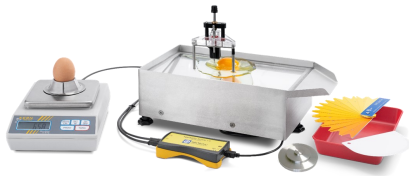


Art.-No.: 6023

Carrying case with foam insert (CR) for BIT CR

Art.-No.: 4007

Combined package with EggQuality 3.0 Basic equipment Art.-No.: 4001 (Haugh-Units), FEST device, measuring probe, caliper, including software licence with the following individual components:



Art.-No.: 4001

Bröring EggQuality 3.0 Basic equipment (Haugh-Units)



Art.-No.: 1101

Fast-Egg-Shell-Tester

inclusive:

- Power supply unit (Art.-No.: 2011)
- Balancing weight 1000 g (Art.-No.: 1518)
- Carrying case (Art.-No.: 6022)



Art.-No.: 1505

BIT Measuring probe with modified anvil for shell thickness incl. PC interface



Art.-No.: 1506

BIT Bröring Caliper for egg shape index 150 mm, incl. PC interface



Art.-No.: 2105

USB-Hub

4 port USB hub, model depending on availability



Art.-No.: 5002

Bröring EggQuality PC-Software (FEST), Licence for FEST device

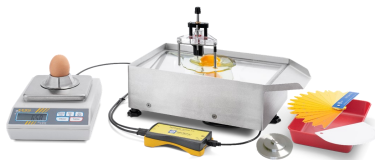


Art.-No.: 6023

Carrying case with foam insert (CR) for BIT CR

Art.-No.: 4008

Combined package with EggQuality 3.0 Basic equipment Art.-No.: 4001 (Haugh-Units) with FEST device, yolk colour measuring system, measuring probe, caliper, including software licence with the following individual components: :



Art.-No.: 4001

Bröring EggQuality 3.0 Basic equipment (Haugh-Units)



Art.-No.: 1101

Fast-Egg-Shell-Tester

inclusive:

- Power supply unit (Art.-No.: 2011)
- Balancing weight 1000 g (Art.-No.: 1518)
- Carrying case (Art.-No.:6022)



Art.-No.: 1112

Yolk colour meter

The colour meter also serves as a worktable and replaces the worktable

Art.-No.: 2005



Art.-No.: 1505

BIT Measuring probe with modified anvil for shell thickness incl. PC interface



Art.-No.: 1506

BIT Bröring Caliper for egg shape index 150 mm, incl. PC interface



Art.-No.: 2105

USB-Hub

4 port USB hub, model depending on availability



Art.-No.: 5002

Bröring EggQuality PC-Software (FEST), Licence for FEST device



Art.-No.: 5003

Bröring EggQuality PC-Software (CR), Licence for colourimeter



Art.-No.: 6023

Carrying case with foam insert (CR) for BIT CR

Measurement technology for the poultry industry for over 20 years

Art.-No.: 4010

Combined package Bröring EggQuality 3.0 Basic equipment (Haugh-Units) BLUETOOTH with EggQuality 3.0 with the following individual components and the free app from the Google PlayStore:



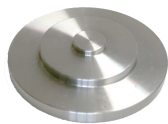
Art.-No.: 1202

Egg white height gauge with display
Version: Bluetooth



Art.-No.: 1508

Laboratory balance Kern 440-43N BT, 400 g max.
Version: Bluetooth



Art.-No.: 2001

Adjustment plate for egg white height gauge
Material: stainless steel



Art.-No.: 2005

Bröring work table type I (normal version)
Dimensions: 300 x 190 x 120 mm (L*W*H)
Design: Walls of brushed stainless steel, glass top



Art.-No.: 2050

Set with drip tray, plastic spatula, colour fan, egg cup in stainless steel, Licefa work bowl A4-3, base 210 x 150 mm, 40 mm deep, top edge 260 x 200 mm, plastic spatula with 12 cm scraping edge



Art.-No.: 3008

Holder for tablet
Design: Aluminium



Tablet Samsung 7" or 8"
model depending on availability



Art.-No.: 6024

Carrying case with foam insert for egg white height gauge Bluetooth

Art.-No.: 4101

Combined package Bröring EggQuality 3.0 Basic equipment (Haugh-Units) BLUETOOTH with EggQuality 3.0 with the following individual components and the free app from the Google PlayStore:



Art.-No.: 1104

Fast Egg Shell Tester Bluetooth,
with battery and charger



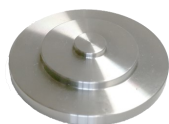
Art.-No.: 1202

Egg white height gauge with display
Version: Bluetooth



Art.-No.: 1508

Laboratory balance Kern 440-43N BT, 400 g max.
Version: Bluetooth



Art.-No.: 2001

Adjustment plate for egg white height gauge
Material: stainless steel



Art.-No.: 2005

Bröring work table type I (normal version)
Dimensions: 300 x 190 x 120 mm (L*W*H)
Design: Walls of brushed stainless steel, glass top



Art.-No.: 2050

Set with drip tray, plastic spatula, colour fan, egg cup in stainless steel, Licefa work bowl A4-3, base 210 x 150 mm, 40 mm deep, top edge 260 x 200 mm, plastic spatula with 12 cm scraping edge



Art.-No.: 3008

Holder for tablet
Design: Aluminium



Tablet Samsung 7" or 8"
model depending on availability



Art.-No.: 6022

Transport case with foam insert for FEST unit
Dimensions: (350 x 150 x 290 mm (WxHxD))



Art.-No.: 6024

Carrying case with foam insert for egg white height gauge Bluetooth

ACCESSORIES AND SPARE PARTS FOR BRÖRING EGGQUALITY 3.0



Art.-No.: 1002

Mini data collector for Bröring EggQuality 3.0 system



Art.-No.: 1112

Bröring EggQuality 3.0 Yolk colour measuring system built into worktable Stand-Alone



Art.-No.: 1201

Egg white height gauge
for Bröring EggQuality 3.0 system



Art.-No.: 1202

Egg white height gauge with display, Bluetooth
for Bröring EggQuality 3.0 Mobile



Art.-No.: 1501

Laboratory balance Kern 440-43N,
weighing range 400 g max.



Art.-No.: 1502

Laboratory balance Kern 440-47N
Weighing range 2000 g max.



Art.-No.: 1503

Laboratory balance Kern EWJ 600 (calibratable)
Note: Calibration only against surcharge



Art.-No.: 1504

Stripe printer Citizen, incl. connection cable



Art.-No.: 1505

Bröring EggQuality System 3.0 Measuring probe with modified anvil for shell thickness incl. PC interface



Art.-No.: 1506

Bröring Caliper for egg shape index 150 mm, incl. PC interface

ACCESSORIES AND SPARE PARTS FOR BRÖRING EGGQUALITY 3.0

	<p>Art.-No.: 5008 Laboratory balance Kern 443-43N BT Weighing capacity 400 g max., Bluetooth</p>
	<p>Art.-No.: 1517 Test weight 500 g for FEST unit</p>
	<p>Art.-No.: 1518 Balance weight 1000 g (single as spare part)</p>
	<p>Art.-No.: 2001 Adjustment plate for egg white height gauge Material: stainless steel (included in all Haugh-Unit packages)</p>
	<p>Art.-No.: 2005 Bröring work table type I (normal version) Dimensions: 300 x 190 x 120 mm (L*W*H) Design: Walls of brushed stainless steel, glass top</p>
	<p>Art.-No.: 2008 Plug-in power supply for Bröring data collector and for Bröring yolk colourimeter</p>
	<p>Art.-No.: 2011 Power supply 12V, 1A DC, input voltage 100V - 250V AC (single as spare part) Attention: A special power supply unit may be required for your country, which can be purchased from your local specialist dealer.</p>
	<p>Art.-No.: 2050 Set with drip tray, plastic spatula, colour fan, egg cup in stainless steel, Licefa work bowl A4-3, base 210 x 150 mm, 40 mm deep, top edge 260 x 200 mm, plastic spatula with 12 cm scraping edge</p>
	<p>Art.-No.: 2101 Connecting cable from mini data collector to core scale (DB9 to M8)</p>

ACCESSORIES AND SPARE PARTS FOR BRÖRING EGGQUALITY 3.0



Art.-No.: 2102

Adapter cable from old egg white altimeter to new data collector (DIN to M8)



Art.-No.: 2104

USB Adapter 2.0 to Serial RS232



Art.-No.: 2105

USB - Hub

4 port USB hub, model depending on availability



Art.-No.: 3001

Licfa work tray A4-3, base 210 x 150 mm, 40 mm deep, top edge 260 x 200 mm



Art.-No.: 3002

Licfa work tray A4-1, base 175 x 100 mm, 34 mm deep, top edge 205 x 125 mm



Art.-No.: 3003

Plastic spatula with 12 cm scraper card



Art.-No.: 3004

Ribbon for strip printer, Citizen



Art.-No.: 3005

Printer paper for Citizen strip printer

57 x 50 x 12, Ø 63 mm (5 rolls/ pack.)



Art.-No.: 3006

Polystyrene egg cup



Art.-No.: 3007

Stainless steel egg cup

ACCESSORIES AND SPARE PARTS FOR BRÖRING EGGQUALITY 3.0



Art.-No.: 3008

Holding frame for tablet, 43 x 26 x 21 cm (H*W*L)
up to 210 mm gripping width
(without tablet)



Art.-No.: 3009

Yolk Colour Ring in stainless steel
4 x 5 x 5 cm 260 g



Art.-No.: 3010

Plastic air chamber measuring card



Art.-No.: 3011

Bröring Measuring aid



Art.-No.: 3012

Bröring BIT EL 3.0 Egg Lifter



Art.-No.: 3013

Air chamber measuring card without light emitting diode



Art.-No.: 3014

Air chamber measuring card LD with light emitting diode



SOFTWARE

Our systems consist of various hardware components (measuring instruments and accessories) and the PC software required for each. As a rule, the stated price refers to the hardware incl. the software licence (e.g. colour measuring device 1112, shell thickness 1505, caliper gauge 1506).

For items such as the breaking strength measuring device (1101), which can also be operated independently of a PC, we offer the software separately. If you want to combine such devices e.g. with the package 4001 "Bröring EggQuality 3.0 basic equipment (Haugh units)", you need the software licence included in the package 4001 and additionally the software licence 5001 for the breaking strength measuring device.

If you want to combine the package 4001 with a colour measuring device (1112) you do not need an additional software licence.

Art.-No.: 5001

Bröring EggQuality PC-Software (HU), Licence for Haugh Unit

Art.-No.: 5002

Bröring EggQuality PC-Software (FEST), Licence for FEST Gerät

Art.-No.: 5003

Bröring EggQuality PC-Software (CR), Licence for colourimeter

Art.-No.: 5010


Update Bröring EggQuality 3.0 PC software for FEST device / Update to the latest EggQuality 3.0 version

WEIGHT AND QUALITY TESTING OF EGGS

Art.-No.: 7001

Bröring BIT QP 3.0 Software, incl. calibrated core laboratory scale

Weight and quality check of eggs according to KAT guide version/No. 2020.01 with a calibrated laboratory balance and with data export to Excel or as a PDF document

FB 57	Qualitätsmanagement-Handbuch																																																			
		Qualitätsprüfung der sortierten Eier		Stand: Juli 2020																																																
Stichprobe 180 sortierten Eier aus der laufenden Produktion.																																																				
Marke: Test	Gewichtsklasse: L	Printnummer: 2-DE-4005001	Zeitpunkt der Prüfung: 14.00Uhr	31.08.2020																																																
Mitarbeiter: Test123		Ergebnis oberhalb der Toleranz: Meldung an Betriebsleitung Nein																																																		
<table border="1"> <thead> <tr> <th colspan="8">Prüfkriterien</th> </tr> <tr> <th colspan="2">Gewichtskontrolle</th> <th colspan="4">Qualität der Eier</th> <th colspan="2">Printung</th> </tr> <tr> <th colspan="2">Gewichtstoleranz kleiner 10%</th> <th colspan="4">Toleranz bei Qualitätsmängeln: kleiner 5%</th> <th colspan="2">Toleranz kleiner 20%</th> </tr> </thead> <tbody> <tr> <td>innerhalb Toleranz</td> <td>163</td> <td>172</td> <td>172</td> <td>171</td> <td>172</td> <td>172</td> <td>174</td> </tr> <tr> <td>außerhalb Toleranz</td> <td>17</td> <td>8</td> <td>8</td> <td>9</td> <td>8</td> <td>8</td> <td>6</td> </tr> <tr> <td>Freigabe</td> <td>Ja</td> <td>Ja</td> <td>Ja</td> <td>Ja</td> <td>Ja</td> <td>Ja</td> <td>Ja</td> </tr> </tbody> </table>					Prüfkriterien								Gewichtskontrolle		Qualität der Eier				Printung		Gewichtstoleranz kleiner 10%		Toleranz bei Qualitätsmängeln: kleiner 5%				Toleranz kleiner 20%		innerhalb Toleranz	163	172	172	171	172	172	174	außerhalb Toleranz	17	8	8	9	8	8	6	Freigabe	Ja	Ja	Ja	Ja	Ja	Ja	Ja
Prüfkriterien																																																				
Gewichtskontrolle		Qualität der Eier				Printung																																														
Gewichtstoleranz kleiner 10%		Toleranz bei Qualitätsmängeln: kleiner 5%				Toleranz kleiner 20%																																														
innerhalb Toleranz	163	172	172	171	172	172	174																																													
außerhalb Toleranz	17	8	8	9	8	8	6																																													
Freigabe	Ja	Ja	Ja	Ja	Ja	Ja	Ja																																													
Probe	M	L	XL	Luftkammer	Sauberkeit	Knick	Lichtsprung	Oberfläche	Printung																																											
1.	63,0			0	0	1	0	0	0																																											
2.	69,0			0	0	0	0	0	0																																											

Qualitätsprüfung - Bröring IT Tel. 04442 910436

Status Ei Abnahme: Fertig mit 1 Chargen. Fortfahren?

Chargenbezeichnung: Test Gewichtsklasse: M Chargennr.: 1 Chargenanzahl: 18

Anzahl Eier : 10
Horde Gewicht : 45,7g
Gewicht der Eier : 531,9g
Durchschnitt pro Ei : 53,2g
Gesamtgewicht : 577,5g

Anzahl Eier gewogen : 10
Variationskoeffizient : 6,73%
Standardabweichung : 3,57g
Mittelwert : 53,00g
Uniformität : 90,00%

Luftkammer Taste 1 Sauberkeit Taste 2 Knick Taste 3 Lichtsprung Taste 4 Oberfläche Taste 5 Printung Taste 6

4. 52,7 S
5. 55,7 M
6. 56,0 M
7. 47,7 S
8. 46,2 S
9. 53,1 M
10. 51,8 S

1. Charge

Tara Neustart CSV Drucken Beenden

Version 1.0.0.0 - vom 01.09.2020 Thomas Horn

Art.-No.: 7002

Bröring BIT QW 3.0 software, incl. calibrated laboratory balance from Kern

The BIT QW 3.0 programme offers a fast weight measurement of eggs in various tray sizes. A Kern laboratory scale is used for this purpose. Data export to Excel is possible via CSV.

Hordenscale

Einstellungen

Ei Nr 30 gewogen

Hordenbezeichnung Test

Anzahl Eier : 30
Horde Gewicht : 144,0g
Gewicht der Eier : 1856,0g
Durchschnitt pro Ei : 61,9g
Gesamtgewicht : 2000,0g

Anzahl Eier gewogen : 30
Variationskoeffizient : 5,91%
Standardabweichung : 3,78g
Mittelwert : 64,03g
Uniformität : 100,00%

21. 69,00
22. 58,00
23. 63,00
24. 61,00
25. 69,00
26. 58,00
27. 66,00
28. 63,00
29. 69,00
30. 69,00

Reset Tara Speichern Beenden

Version 1.0.0.0 - vom 19.01.2021 Thomas Horn

Fast Egg Shell Tester for testing and checking the breaking strength

Fast Egg Shell Tester to measure the egg shell breaking strength.

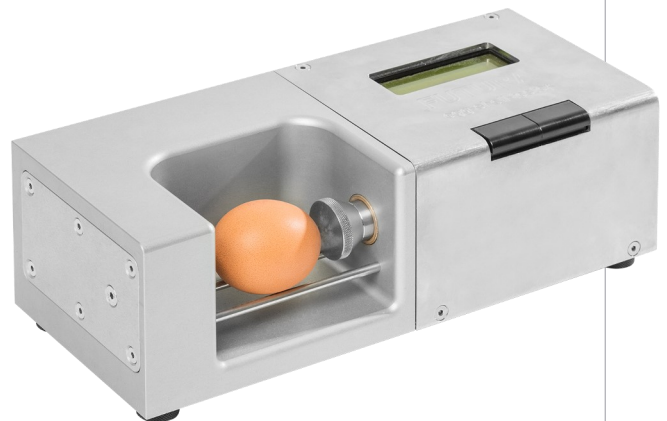
The stability of the eggshell is one of the most important parameters for egg quality.

With our breaking strength measuring device, the breaking strength of eggs can be determined easily and quickly. The FEST device has a very robust metal housing and can be operated quickly and easily with two buttons.

The breaking strength of the eggshell can be displayed either in newtons or grams.

A measurement only takes approx. 2-3 sec. and means a very low time expenditure.

The display is illuminated and easy to read. The FEST device can optionally be connected to components such as a PC incl. software or a printer for data acquisition. For mobile use, e.g. for field staff of feed manufacturers, there is an optional battery module for wireless operation as well as a Bluetooth function with an app for data collection in an Android device such as a tablet or smartphone. The data can then be sent via WhatsApp or e-mail.



Options for the Bröring breaking strength measuring system FEST (Fast Egg Shell Tester)

Art.-No.: 1101 *Bröring EggQuality System 3.0 FEST*
inclusive:
Power supply unit (Art.-No.: 2011)
Balancing weight 1000 g (Art.-No.: 1518)
Carrying case (Art.-No.:6022)

Dimensions (case, 350 x 150 x 290 mm (W*H*D))
Weight: 8.8 kg (incl. accessories and case)



Art.-No.: 1102 *Bröring EggQuality System 3.0 FEST with Bluetooth*
inclusive:
Power supply unit (Art.-No.: 2011)
Balancing weight 1000 g (Art.-No.: 1518)
Carrying case (Art.-No.:6022)



Art.-No.: 1103 *Bröring EggQuality System 3.0 FEST with Battery and charger*
Inclusive:
Power supply unit (Art.-No.: 2011)
Balancing weight 1000 g (Art.-No.: 1518)
Carrying case (Art.-No.:6022)



Art.-No.: 1104 *Bröring EggQuality System 3.0 FEST Bluetooth with Battery and charge*
Inclusive:
Power supply unit (Art.-No.: 2011)
Balancing weight 1000 g (Art.-No.: 1518)
Carrying case (Art.-No.:6022)



Egg white height gauge for determining egg freshness / Haugh Units

NEW and UNIQUE
from
Bröring Technology GmbH



The Haugh unit is now considered the **gold standard** for egg quality testing.

With our egg white height measuring device/ Bluetooth you can determine the egg freshness in just a few seconds. The advantages of our egg white height measuring device/ Bluetooth are clear:

- no annoying cables
- based on Android
- **the height of the egg white is read directly on the coloured display usable**
- **with app and without app**
- Mobile
- with rechargeable battery

This Egg White Height Meter/ Bluetooth replaces the simple Egg White Height Meter and Mini Data Collector.



Egg fresh / Haugh Units

Today, the Haugh unit is considered the gold standard for egg quality testing.

With our egg white height measuring device, you can determine egg freshness in just a few seconds.

In the following we offer you three variants for the determination of egg freshness:

1. Variant: Manulle Haugh-Unit determination with table With this variant, the egg white height and the weight of the egg are read on the display of the egg white height meter and the value of the Haugh-Unit is read from the table. No PC and no software is necessary. If desired, the device can be connected to your PC or smartphone.



Haugh-Unit-Tabelle

Bröring Technology GmbH
Gewerbing 4
49393 Lohne
www.broeringtech.com
info@broeringtech.com Tel. 04442 910436

	45g	46g	47g	48g	49g	50g	51g	52g	53g	54g	55g	56g	57g	58g	59g	60g	61g	62g	63g	64g	65g	66g	67g	68g	69g	70g	71g	72g	73g	74g	75g
2.5mm	49.8	49.4	49.2	47.4	46.8	45.9	45.0	44.2	43.4	42.5	41.7	40.9	40.1	39.3	38.5	37.7	36.9	36.1	35.3	34.5	33.7	32.9	32.1	31.3	30.5	29.7	28.9	28.1	27.3	26.5	25.7
2.6mm	51.2	50.4	49.6	48.1	47.1	46.5	45.7	44.9	44.1	43.3	42.5	41.7	40.9	40.1	39.3	38.5	37.7	36.9	36.1	35.3	34.5	33.7	32.9	32.1	31.3	30.5	29.7	28.9	28.1	27.3	26.5
2.7mm	52.5	51.7	51.0	50.2	49.5	48.7	47.9	47.2	46.4	45.6	44.8	44.0	43.2	42.5	41.7	40.9	40.1	39.3	38.5	37.7	36.9	36.1	35.3	34.5	33.7	32.9	32.1	31.3	30.5	29.7	28.9
2.8mm	53.5	53.0	52.3	51.5	50.7	50.0	49.2	48.4	47.6	46.8	46.0	45.2	44.4	43.6	42.8	42.0	41.2	40.4	39.6	38.8	38.0	37.2	36.4	35.6	34.8	34.0	33.2	32.4	31.6	30.8	30.0
2.9mm	54.5	54.3	53.6	52.8	52.0	51.2	50.4	49.6	48.8	48.0	47.2	46.4	45.6	44.8	44.0	43.2	42.4	41.6	40.8	40.0	39.2	38.4	37.6	36.8	36.0	35.2	34.4	33.6	32.8	32.0	31.2
3.0mm	56.7	56.5	56.3	56.1	55.9	55.7	55.5	55.3	55.1	54.9	54.7	54.5	54.3	54.1	53.9	53.7	53.5	53.3	53.1	52.9	52.7	52.5	52.3	52.1	51.9	51.7	51.5	51.3	51.1	50.9	50.7
3.1mm	57.4	56.7	56.4	56.1	55.8	55.5	55.2	54.9	54.6	54.3	54.0	53.7	53.4	53.1	52.8	52.5	52.2	51.9	51.6	51.3	51.0	50.7	50.4	50.1	49.8	49.5	49.2	48.9	48.6	48.3	48.0
3.2mm	58.5	57.9	57.2	56.5	56.0	55.3	54.6	54.0	53.3	52.7	52.0	51.3	50.6	50.0	49.3	48.6	47.9	47.2	46.5	45.8	45.1	44.4	43.7	43.0	42.3	41.6	40.9	40.2	39.5	38.8	38.1
3.3mm	59.5	59.0	58.4	57.7	57.1	56.5	55.8	55.2	54.5	53.9	53.2	52.6	51.9	51.2	50.5	49.8	49.1	48.4	47.7	47.0	46.3	45.6	44.9	44.2	43.5	42.8	42.1	41.4	40.7	40.0	39.3
3.4mm	60.7	60.1	59.5	58.8	58.3	57.6	57.0	56.4	55.8	55.2	54.5	53.9	53.2	52.6	51.9	51.2	50.5	49.8	49.1	48.4	47.7	47.0	46.3	45.6	44.9	44.2	43.5	42.8	42.1	41.4	40.7
3.5mm	61.8	61.2	60.6	60.0	59.4	58.8	58.2	57.6	57.0	56.4	55.8	55.2	54.5	53.9	53.2	52.6	51.9	51.2	50.5	49.8	49.1	48.4	47.7	47.0	46.3	45.6	44.9	44.2	43.5	42.8	42.1
3.6mm	62.9	62.3	61.7	61.1	60.5	59.9	59.3	58.7	58.1	57.5	56.9	56.3	55.7	55.1	54.5	53.9	53.2	52.6	51.9	51.2	50.5	49.8	49.1	48.4	47.7	47.0	46.3	45.6	44.9	44.2	43.5
3.7mm	63.9	63.3	62.7	62.1	61.5	60.9	60.3	59.7	59.1	58.5	57.9	57.3	56.7	56.1	55.5	54.9	54.3	53.7	53.1	52.5	51.9	51.3	50.7	50.1	49.5	48.9	48.3	47.7	47.1	46.5	45.9
3.8mm	64.9	64.3	63.7	63.1	62.5	61.9	61.3	60.7	60.1	59.5	58.9	58.3	57.7	57.1	56.5	55.9	55.3	54.7	54.1	53.5	52.9	52.3	51.7	51.1	50.5	49.9	49.3	48.7	48.1	47.5	46.9
3.9mm	65.8	65.2	64.6	64.0	63.4	62.8	62.2	61.6	61.0	60.4	59.8	59.2	58.6	58.0	57.4	56.8	56.2	55.6	55.0	54.4	53.8	53.2	52.6	52.0	51.4	50.8	50.2	49.6	49.0	48.4	47.8
4.0mm	66.7	66.2	65.7	65.1	64.6	64.0	63.4	62.8	62.2	61.6	61.0	60.4	59.8	59.2	58.6	58.0	57.4	56.8	56.2	55.6	55.0	54.4	53.8	53.2	52.6	52.0	51.4	50.8	50.2	49.6	49.0
4.1mm	67.6	67.1	66.6	66.1	65.5	65.0	64.4	63.8	63.2	62.6	62.0	61.4	60.8	60.2	59.6	59.0	58.4	57.8	57.2	56.6	56.0	55.4	54.8	54.2	53.6	53.0	52.4	51.8	51.2	50.6	50.0
4.2mm	68.6	68.0	67.5	67.0	66.5	65.9	65.3	64.7	64.1	63.5	62.9	62.3	61.7	61.1	60.5	59.9	59.3	58.7	58.1	57.5	56.9	56.3	55.7	55.1	54.5	53.9	53.3	52.7	52.1	51.5	50.9
4.3mm	69.4	68.9	68.4	67.9	67.4	66.9	66.3	65.7	65.1	64.5	63.9	63.3	62.7	62.1	61.5	60.9	60.3	59.7	59.1	58.5	57.9	57.3	56.7	56.1	55.5	54.9	54.3	53.7	53.1	52.5	51.9
4.4mm	70.3	69.8	69.3	68.8	68.3	67.7	67.1	66.5	65.9	65.3	64.7	64.1	63.5	62.9	62.3	61.7	61.1	60.5	59.9	59.3	58.7	58.1	57.5	56.9	56.3	55.7	55.1	54.5	53.9	53.3	52.7
4.5mm	71.2	70.7	70.2	69.7	69.2	68.6	68.0	67.4	66.8	66.2	65.6	65.0	64.4	63.8	63.2	62.6	62.0	61.4	60.8	60.2	59.6	59.0	58.4	57.8	57.2	56.6	56.0	55.4	54.8	54.2	53.6
4.6mm	72.0	71.5	71.0	70.5	70.0	69.4	68.8	68.2	67.6	67.0	66.4	65.8	65.2	64.6	64.0	63.4	62.8	62.2	61.6	61.0	60.4	59.8	59.2	58.6	58.0	57.4	56.8	56.2	55.6	55.0	54.4
4.7mm	72.8	72.4	71.9	71.4	70.9	70.3	69.7	69.1	68.5	67.9	67.3	66.7	66.1	65.5	64.9	64.3	63.7	63.1	62.5	61.9	61.3	60.7	60.1	59.5	58.9	58.3	57.7	57.1	56.5	55.9	55.3
4.8mm	73.6	73.2	72.7	72.2	71.7	71.1	70.5	70.0	69.4	68.8	68.2	67.6	67.0	66.4	65.8	65.2	64.6	64.0	63.4	62.8	62.2	61.6	61.0	60.4	59.8	59.2	58.6	58.0	57.4	56.8	56.2
4.9mm	74.4	74.0	73.5	73.0	72.5	72.0	71.4	70.8	70.2	69.6	69.0	68.4	67.8	67.2	66.6	66.0	65.4	64.8	64.2	63.6	63.0	62.4	61.8	61.2	60.6	60.0	59.4	58.8	58.2	57.6	57.0
5.0mm	75.2	74.7	74.3	73.8	73.3	72.8	72.3	71.7	71.1	70.5	69.9	69.3	68.7	68.1	67.5	66.9	66.3	65.7	65.1	64.5	63.9	63.3	62.7	62.1	61.5	60.9	60.3	59.7	59.1	58.5	57.9
5.1mm	75.9	75.5	75.1	74.7	74.2	73.8	73.3	72.8	72.3	71.7	71.1	70.5	69.9	69.3	68.7	68.1	67.5	66.9	66.3	65.7	65.1	64.5	63.9	63.3	62.7	62.1	61.5	60.9	60.3	59.7	59.1
5.2mm	76.7	76.3	75.9	75.4	75.0	74.6	74.1	73.7	73.3	72.8	72.3	71.7	71.1	70.5	69.9	69.3	68.7	68.1	67.5	66.9	66.3	65.7	65.1	64.5	63.9	63.3	62.7	62.1	61.5	60.9	60.3
5.3mm	77.4	77.0	76.6	76.2	75.8	75.4	75.0	74.6	74.1	73.7	73.3	72.8	72.3	71.7	71.1	70.5	69.9	69.3	68.7	68.1	67.5	66.9	66.3	65.7	65.1	64.5	63.9	63.3	62.7	62.1	61.5
5.4mm	78.2	77.7	77.3	76.9	76.5	76.1	75.7	75.3	74.9	74.5	74.1	73.7	73.3	72.8	72.3	71.7	71.1	70.5	69.9	69.3	68.7	68.1	67.5	66.9	66.3	65.7	65.1	64.5	63.9	63.3	62.7
5.5mm	78.9	78.5	78.1	77.7	77.3	76.9	76.5	76.1	75.7	75.3	74.9	74.5	74.1	73.7	73.3	72.8	72.3	71.7	71.1	70.5	69.9	69.3	68.7	68.1	67.5	66.9	66.3	65.7	65.1	64.5	63.9
5.6mm	79.6	79.2	78.8	78.4	78.0	77.6	77.2	76.8	76.4	76.0	75.6	75.2	74.8	74.4	74.0	73.6	73.2	72.8	72.4	72.0	71.6	71.2	70.8	70.4	70.0	69.6	69.2	68.8	68.4	68.0	67.6
5.7mm	80.3	79.9	79.5	79.1	78.7	78.3	77.9	77.5	77.1	76.7	76.3	75.9	75.5	75.1	74.7	74.3	73.9	73.5	73.1	72.7	72.3	71.9	71.5	71.1	70.7	70.3	69.9	69.5	69.1	68.7	68.3
5.8mm	80.9	80.5	80.1	79.7	79.3	78.9	78.5	78.1	77.7	77.3	76.9	76.5	76.1	75.7	75.3	74.9	74.5	74.1	73.7	73.3	72.9	72.5	72.1	71.7	71.3	70.9	70.5	70.1	69.7	69.3	68.9
5.9mm	81.6	81.2	80.8	80.4	80.0	79.6	79.2	78.8	78.4	78.0	77.6	77.2	76.8	76.4	76.0	75.6	75.2	74.8	74.4	74.0	73.6	73.2	72.8	72.4	72.0	71.6	71.2	70.8	70.4	70.0	69.6
6.0mm	82.3	81.9	81.5	81.1	80.7	80.3	79.9	79.5	79.1	78.7	78.3	77.9	77.5	77.1	76.7	76.3	75.9	75.5	75.1	74.7	74.3	73.9	73.5	73.1	72.7	72.3	71.9	71.5	71.1	70.7	70.3
6.1mm	82.9	82.5	82.1	81.7	81.3	80.9	80.5	80.1	79.7	79.3	78.9	78.5	78.1	77.7	77.3	76.9	76.5	76.1	75.7	75.3	74.9	74.5	74.1	73.7	73.3	72.9	72.5	72.1	71.7	71.3	70.9
6.2mm	83.6	83.2	82.8	82.4	82.0	81.6	81.2	80.8	80.4	80.0	79.6	79.2	78.8	78.4	78.0	77.6	77.2	76.8	76.4	76.0	75.6	75.2	74.8	74.4	74.0	73.6	73.2	72.8	72.4	72.0	71.6
6.3mm	84.2	83.8	83.4	83.0	82.6	82.2	81.8	81.4	81.0	80.6	80.2	79.8	79.4	79.0	78.6	78.2	77.8	77.4	77.0	76.6	76.2	75.8	75.4	75.0	74.6	74.2	73.8	73.4	73.0	72.6	72.2
6.4mm	84.8	84.4	84.0	83.6	83.2	82.8	82.4	82.0	81.6	81.2	80.8	80.4	80.0	79.6	79.2	78.8	78.4	78.0	77.6	77.2	76.8	76.4	76.0	75.6	75.2	74.8	74.4	74.0	73.6	73.2	72.8
6.5mm	85.4	85.0	84.6	84.2	83.8	83.4	83.0	82.6	82.2	81.8	81.4	81.0	80.6	80.2	79.8	79.4	79.0	78.6	78.2	77.8	77.4	77.0	76.6	76.2	75.8	75.4	75.0	74.6	74.2	73.8	73.4
6.6mm	86.0	85.7	85.3	85.0	84.7	84.3	84.0	83.7	83.3	83.0	82.7	82.4	82.0	81.7	81.4	81.0															

3. Variant: Automatic Haugh-Unit determination, optionally with Android tablet With this variant, the egg white height and the weight of the egg are sent directly to your Android device, where the Haugh-Units are calculated automatically. Your data is automatically saved and you can print out reports.



For all three variants, you must proceed as follows:

1. Weigh the egg
2. Break the egg on a flat glass plate
3. Position the egg white height gauge over the egg white so that the measuring needle is above the egg white at a distance of approx. 1 cm from the edge of the yolk.
4. Press down the needle
5. Read the value from the table or from the display of the egg white height gauge (variant 1+2) or from the display of the tablet (variant 3)

Guide values for the quality of egg freshness:

100 - the highest and best quality
90 - excellent
80 - very good
75 - good
70 - acceptable
65 - borderline
60 - critical consumer level
55 - too low
50 - unacceptable
40 - poor
30 - very poor
20 - lowest / worst quality

Guide values for the quality of egg freshness according to USDA:

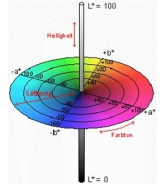
AA : 72 or more
A : 71 - 60
B : 59 - 31
C : 30 or less

The internal quality of a fresh egg can be negatively influenced by a disease (e.g. I.B.) in a flock. In the case of a fresh egg from a sick hen, this can be seen by a sudden sharp reduction in the height of the albumen.

Yolk colour meter



Our measuring devices work with an RGB sensor whose filter curves correspond to the human eye (3-range method). From the red, green and blue components, we calculate the $L^*a^*b^*$ values, from which the Roche value is then calculated. In our software, both the $L^*a^*b^*$ values and the Roche values are stored.



The name "Roche" refers to the company Roche, which brought out the colour fan shown here on the right a few years ago. Roche was later taken over by DSM Nutrition Products GmbH.



The colour of the egg yolk is traditionally expressed in "Roche values" from 1 to 15.

For our EggQuality 3.0 system, we offer a colour sensor that is integrated into the worktable. This enables a quick and clean determination of the yolk colour. For the measurement, the egg is cracked on the worktable. If necessary, the egg white height is then measured. Then the yolk is positioned over the sensor and the measurement is triggered on the PC. The device has a USB port and can be connected directly to the PC.



Micrometer for determining the shell thickness

The shell thickness is determined with a special measuring probe.

A "normal" micrometer probe has two parallel measuring surfaces. These are unsuitable for determining the shell thickness because of the curvature of the eggshell.

We supply a special measuring probe with a large illuminated colour display and a rounded contact surface as well as a suitable practical holder. Our measuring probe is optionally available with a data cable with which it can be connected directly to a PC. .



Poultry scales

Poultry Scale BRÖRING BIT PS 3.0 / Bluetooth - Innovative solution for manually weighing your animals

Here we present our new product - poultry scale Bröring BIT PS 3.0, which we have developed in cooperation with users:

Portable, handy poultry scale

- Storage capacity: 240,000 data records
- for pullets, laying hens and fattening poultry
- Operation via touchscreen or smartphone or tablet
- Display of individual weight, average, uniformity, min. / max. and number
- incl. USB charging adapter for 110/230 V and 12V (car connection), carrying case
- Weighing range: max. 10 kg (for turkey model max. 40 kg)
- Resolution: 1g
- Battery life: up to 16 hours
- Languages: German, English, Russian
- Data processing: PC software via USB / Android app via Bluetooth



Our biggest advantages are: Bluetooth connection to Android app and data export

Our newly developed poultry scale is an enormous relief for your work. The handy design and user-friendly handling will inspire you. Large illuminated colour display with touch screen is very easy to read and handle.

In Life mode, the scale shows simple statistics on the display. In this mode, the readings are not transmitted on the scale but continuously via Bluetooth and can be received and saved on an Android device with our free app.

In save-on-scale mode, the measured weights are saved directly on the scale in the measurement series and the display shows statistical data on the current measurement series. When the measurement is complete, all data can be easily, quickly and orderly transferred via Bluetooth to our app on your Android smartphone or tablet. Alternatively, the scale can also be connected to a PC via USB cable, where the data can be processed with our PC software, which is also free of charge. Both apps offer advanced statistics with charts and allow you to export the data for further processing.

It is no longer necessary to calculate statistics yourself or manually transfer the data to Excel spreadsheets. The innovative Bröring BIT PS 3.0 app displays statistics, histograms and growth curves of all your herds automatically. No matter how many farms you have and how many scales you use, our app can display all data such as number / min / max / average / uniformity over the entire lifetime of a herd in an understandable and clear way.

Scope of delivery:

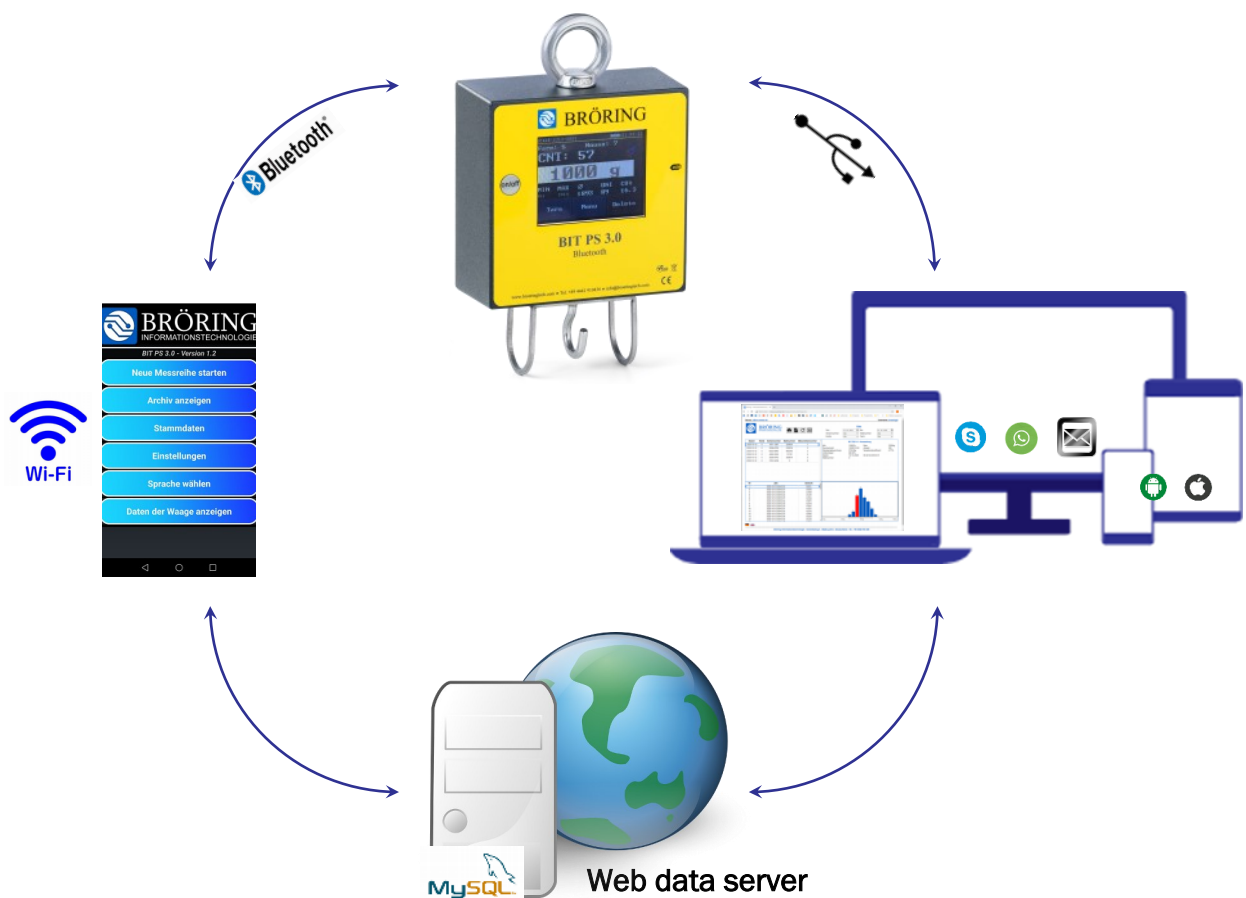
Poultry scale BIT PS 3.0
incl. carrying case, USB power supply
USB type B cable 150 cm,
car charger adapter, Android app, manual



Poultry Scale BIT PS 3.0 with Bluetooth and USB

Compatible with poultry scales BIT PS 4.0 and BIT PS 5.0

The individual weights are stored on the scale and can then be transferred either via USB interface to a PC or via Bluetooth to an Android device. On the smartphone or PC, documents can be generated from the data in PDF format or as an Excel file (CSV), which can then be sent by e-mail. In addition, the data can be transferred to an online database. Via a web server, the data can be displayed in any web browser, regardless of the end device or operating system. The data can optionally be stored on a database server provided by the customer so that all data remain "in house".



... in use with our customers



NEW and UNIQUE

Poultry scale BIT PS 4.0 with Bluetooth and USB

Compatible with poultry scales BIT PS 3.0 and BIT PS 5.0

NEW!!! WiFi connection to database and website! **UNIQUE!!!** A website hosted on the scale

Highlights of Bröring BIT PS 4.0 IoT

- + Bluetooth connection to smartphone Android app and cloud
- + Database and Excel export
- + Multiple weighing

Portable poultry scale

- + for pullets, layers and fattening poultry
- + operation via touchscreen or smartphone or tablet
- + weighing range max. 10 kg for chickens and max. 40 kg for turkeys
- + display of individual weight, average, uniformity, min/ max and number of pieces
- + free PC software, (Android app and web browser (iOS))

Unlimited connection possibilities

- Data transfer via WiFi, USB and Bluetooth
- Uniform display on smartphone, tablet and PC
- Any end device with web browser (IOS, Android, PC)
- Combination of data from multiple scales and locations
- Database local or global
- Data export to Excel
- Data transfer via email, WhatsApp or Skype



NEW and UNIQUE

Automatic poultry scale BIT PS 5.0

Compatible with poultry scales BIT PS 3.0 and BIT PS 5.0

NEW!!! WiFi connection to database and website

UNIQUE!!! A website hosted on the scale

- Fully automatic detection and analysis of the weights of your animals
- Detailed statistics and growth curve
- Accurate recording of your animals around the clock
- in combination with Bröring cloud solution - always the best overview of your animals

Automatic recognition, analysis and storage

The BIT PS 5.0 Automatic Scale has an intelligent algorithm to record animal weights, store and analyse the data. The data can be viewed or exported via the scale's integrated website.

Unique! Integrated website

What does that mean? No additional software or apps! Uniform display and usable with any device. No matter whether IOS, Android, Mac or Windows!



Operable via smartphone

The scale has WiFi to display the data on a website and/or integrate the scale into a network.



ACCESSORIES FOR POULTRY SCALES



Art.-No.: 6050
MO Wing clamp
Material: stainless steel



Art.-No.: 6051
Advanced Hook
Material: stainless steel



Art.-No.: 6052
Wing clamp VB, blue
Material: steel, lacquered



Art.-No.: 6053
Kern calibration hook weight, 1 kg
Material: stainless steel, fine turned



Art.-No.: 6054
USB power supply, incl. USB type B cable, 150 cm



Art.-No.: 6055
Car-loading adapter, incl. USB Typ B cable, 150 cm

ACCESSORIES FOR POULTRY SCALES



Art.-No.: 6056

Stainless steel tare tray for day-old chicks,
Maximum load: 30 kg,
Dimensions: 290 x 240 x 340 mm
Material: stainless steel



Art.-No.: 6057

Weighing hook BIT 1
Use for turkeys and turkeys
Material: stainless steel



Art.-No.: 6058

Weighing hook BIT 2
Use for turkeys and turkeys
Material: stainless steel



Art.-No.: 6059

Weighing hook BIT 3
Use for turkeys and turkeys
Material: stainless steel



Art.-No.: 6060

Weighing hopper
Material: steel, galvanised



Art.-No.: 6063

Hanging plate with telescopic rod
Base plate 40x40 cm
Material: stainless steel and plastic

ACCESSORIES FOR POULTRY SCALES



Art.-No.: 6070

External force transducer

- max. 20kg/30lg/50kg/100kg

- 5 m cable



Art.-No.: 6071

Extension cable 15m



Art.-No.: 6072

Extension cable 30m



Art.-No.: 6073

Extension cable 50m

Art.-No.: 6074

Accessories BIT PS 5.0

- Chain 3m

- 2 x snap hooks 8x80mm VA

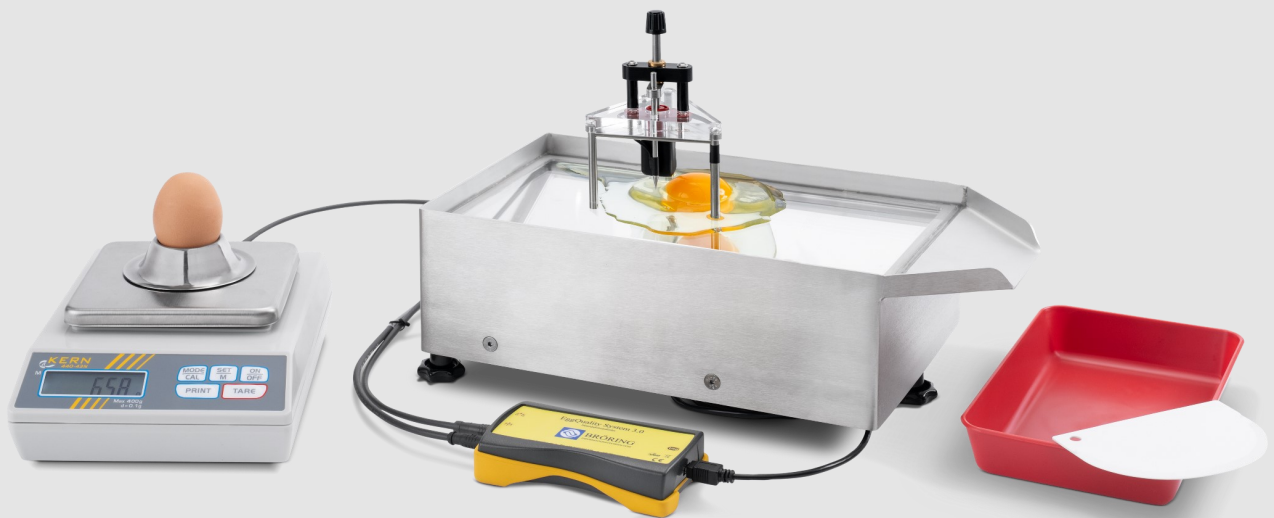
Art.-No.: 6075

WLAN Hotspot LTE Mobile

Distributoren



BRÖRING
Technology GmbH



*Bröring Technology GmbH
Dr.- Ing. Stefan Bröring
Gewerbering 4
D-49393 Lohne
Tel.: +49 4442 910 436
info@broeringtech.com
www.broeringtech.com*